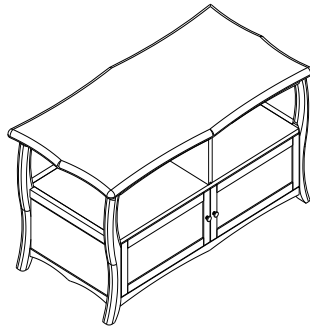


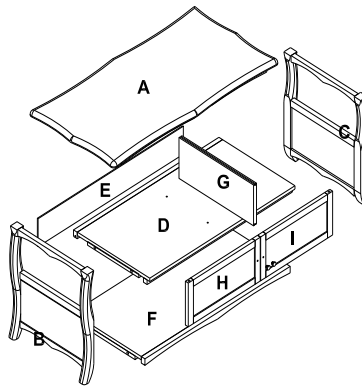
# TV Stand



Thank you for purchasing our TV Stand. We have found it helpful to have a second person present in at least one step of the assembly.

## TV Stand Assembly Instructions

Lay out all parts on a "non-abrasive" surface to avoid scratching furniture.



NO.	DRAWING	DESCRIPTION	QTY.
A		TOP	1
B		END PANEL-L	1
C		END PANEL-R	1
D		SHELF	1
E		BACK PANEL	1
F		BOTTOM PANEL	1
H		DOOR-L	1
I		DOOR-R	1
G		DIVIDER	1

NO.	DRAWING	DESCRIPTION	QTY.
J		M6*30mm BOLT	12
K		M6*60 BOLT	2
L		270mm WIRE GLIDE	2
M		ALLEN WRENCH	1
N		MINIFIX CONNECTING BOLT	2
O		KNOB	2
P		KNOB SCREW	2

## PARTS

### Step 1

Read through these instructions thoroughly before beginning assembly. We have found this to be of great value when first assembling this product.

### Step 2

Remove all parts and hardware from packing material. Wooden pieces should be placed on a non abrasive surface (like the carton or carpet) to prevent damage to the finish.

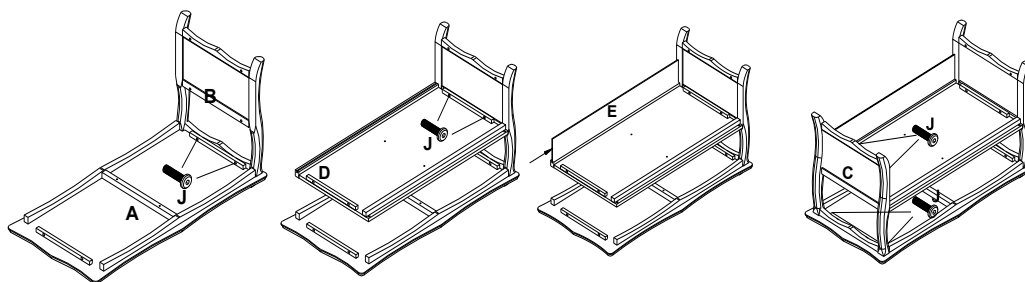
### Step 3, 4 and 5

**Note:** It will help to have a second person at this time to assist in assembly.

Lay Top (A) upside down. Attach Left End Panel (B) to Top (A) with 2 Hex Bolts M6 x 30mm (J).

Attach Shelf (D) to Left End Panel (B) with 2 Hex Bolts M6 x 30MM (J). **Note:** Stand is upside-down

Back Panel (E) into groove in Shelf (D) and Left End Panel (B). right panel is on left-hand side.  
Attach Right End Panel (C) to Top (A) and Shelf (J) with 4 Hex Bolts M6 x 30mm (J).



---

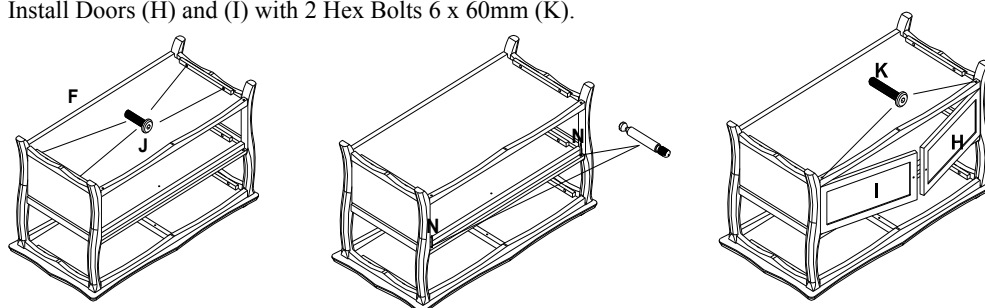
### Step 6 and 7

Note: It will help to have a second person at this time to assist in assembly.

Attach Bottom Panel (F) to Left and Right End Assemblies (B + C) using 4 Hex Bolts M6 x 30 (J).

Put 2 Minifix Connecting Bolts (N) into Shelf (D)

Install Doors (H) and (I) with 2 Hex Bolts 6 x 60mm (K).



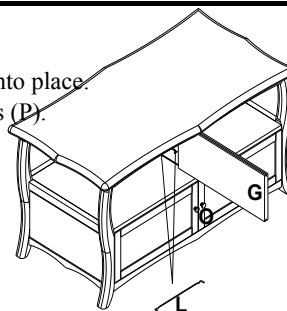
---

### Step 8, 9, 10 and 11

Turn TV Stand Right-side Up.

Install Wire Guide (L) to Top (A) and Shelf (D) and slide Divider (I) into place.

Attach 2 Door Pulls (O) to Doors (H) and (I) using 4 Door Pull Screws (P).



---

### CARE

Clean with mild soap and wipe dry.

---

### REPLACEMENT PARTS:

For best service, to order replacement parts go to [www.alaterrefurniture.com](http://www.alaterrefurniture.com). Use the order form on the web site to order your replacement parts. **Thank You!**